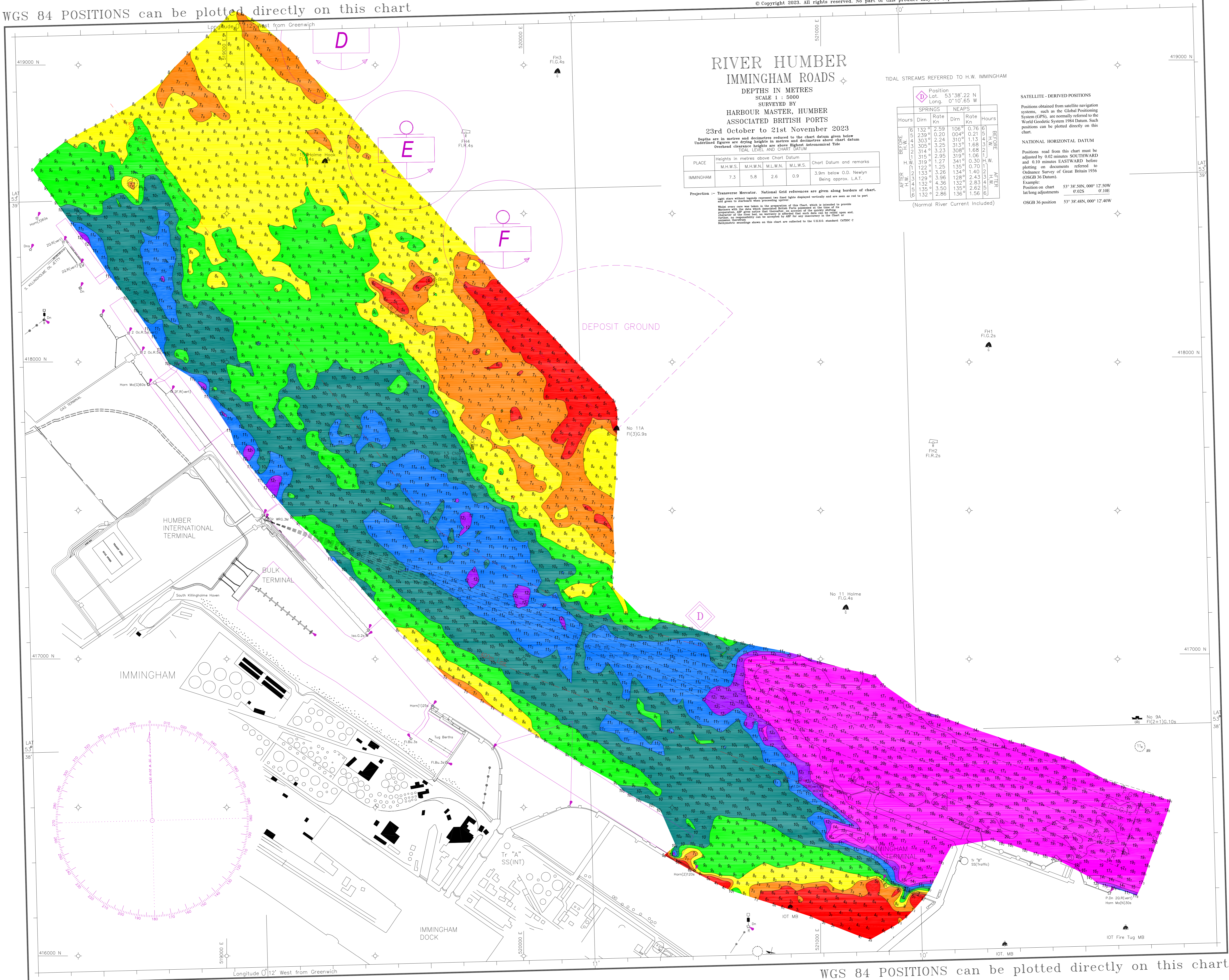


WGS 84 POSITIONS can be plotted directly on this chart



RIVER HUMBER IMMINGHAM ROADS

DEPTHS IN METRES
SCALE 1 : 5000
SURVEYED BY
HARBOUR MASTER, HUMBER
ASSOCIATED BRITISH PORTS
23rd October to 21st November 2023
Depths are in metres and decimetres reduced to the chart datum given below
Underlined figures are drying heights in metres and decimetres above chart datum
Overhead clearance heights are above Highest Astronomical Tide
TIDE LEVEL AND CHART DATUM

PLACE	Heights in metres above Chart Datum				Chart Datum and remarks
	M.H.W.S.	M.H.W.N.	M.L.W.N.	M.L.W.S.	
IMMINGHAM	7.3	5.8	2.6	0.9	3.9m below O.D. Newlyn Being approx. L.A.T.

Projection - Transverse Mercator. National Grid references are given along borders of chart.
Light stars without legends represent two fixed lights disposed vertically and are seen as red to port
and green to starboard when proceeding astern.

While every care was taken in the preparation of this chart, which is intended to provide
navigators with the data which appears therein, there are at the time of its
publication, and give notice that there may be changes in the character of the river bed, or
any other circumstances, which may affect the accuracy of the data shown on the chart, and
therefore, no responsibility can be accepted for any discrepancy in the chart, or
consequent therefrom.
Hydrographic measurements shown on this chart are collected to the U.K. standard, CANTOC C

TIDAL STREAMS REFERRED TO H.W. IMMINGHAM

Position	SPRINGS		NEAPS		Hours
	Dirn	Rate Kn	Dirn	Rate Kn	
BEFORE H.W.	132°	2.59	106°	0.76	6
	239°	0.20	004°	0.21	6
	303°	2.24	310°	1.13	6
	306°	3.25	313°	1.68	6
	314°	3.23	308°	1.68	6
	315°	2.95	319°	1.06	6
AFTER H.W.	319°	1.27	341°	0.30	6
	122°	1.25	135°	0.70	11
	129°	3.96	128°	2.43	11
	132°	4.36	132°	2.83	11
	135°	3.50	135°	2.82	11
	132°	2.86	136°	1.56	11

(Normal River Current Included)

SATELLITE - DERIVED POSITIONS

Positions obtained from satellite navigation systems, such as the Global Positioning System (GPS), are normally referred to the World Geodetic System 1984 Datum. Such positions can be plotted directly on this chart.

NATIONAL HORIZONTAL DATUM

Positions read from this chart must be adjusted by 0.02 minutes SOUTHWARD and 0.10 minutes EASTWARD before plotting on documents referred to Ordnance Survey of Great Britain 1936 (OSGB 36 Datum).

Example:
Position on chart
lat/long adjustments
OSGB 36 position

53° 38' 50N, 000° 12' 50W
0.02S
53° 38' 48N, 000° 12' 40W

DEPOSIT GROUND

WGS 84 POSITIONS can be plotted directly on this chart